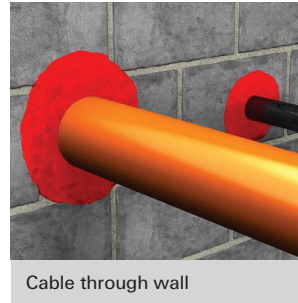


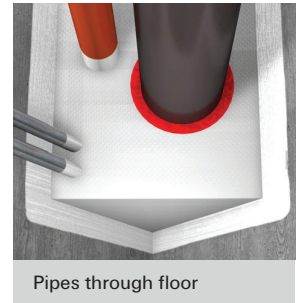
Universal firestopping sealant which is suitable for metallic, non metallic services and construction joints



Mixed services



Cable through wall



Pipes through floor

APPLICATIONS

- Metallic services-Steel & Cast Iron 20" (500mm) - Copper 6" (150mm)
- Non metallic service- PVC 2" (51mm Open) 3" (75mm Closed)
- Insulated service - 20" (500mm)
- Construction Joints - 4" (100mm)
- HVAC 100" (2500mm)
- Cable bunches 4" (100mm) - Busway 27" (686)

ADVANTAGES

- Water based
- Flexible set
- Contains mould growth inhibitor
- Freeze - thaw capabilities
- Paintable
- Accelerated age & humidity tested
- Low VOC
- Excellent acoustic properties

APPROVALS

American Standard

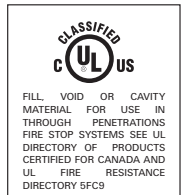
ASTM E 814
(UL 1479)

American Standard

ASTM E 84
(UL 723)

American Standard

ASTM E 1966
(UL 2079)



BUILDING MATERIALS

Suitable for:

- Wall constructions - linear joints
- Floor constructions - linear joints
- Flexible wall
- Masonry
- Concrete

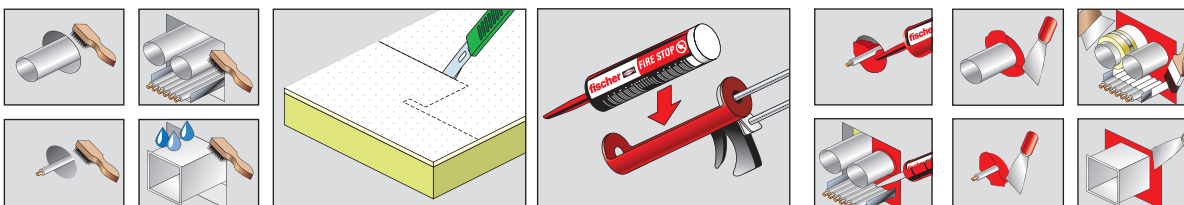
DESCRIPTION

- fischer UFS 310 is a one part water based intumescent sealant which is used for sealing construction joints and service penetration in both vertical and horizontal applications. Tested in accordance with ASTM E 814 (UL1479) ASTM E 1966 (UL2079) ASTM E 84 (UL723) the fischer UFS 310 can provide upto 4 hours fire rating.
- It exhibits excellent slump characteristics, is easy to apply and cures to a flexible set. It is suitable for internal applications and conditions where dynamic movement may occur.
- Vast testing with a variety of service penetrations and joint configurations makes it a universal firestop for most applications. properties and is formulated to be halogen and solvent free.

INSTALLATION

Note: Firestop material must be installed in accordance with detailed instruction or the approved system:

1. Clean all contact surfaces so they are free from loose debris and contaminants such as oil, dirt, grease, wax, old sealant etc.
2. Install the required backing material as per the detailed instruction or approved system
Note: Backing material MUST be installed under compression - there should be no loose backing material, voids or gaps present
3. For best application results - fischer UFS 310 should be at room temperature
4. Apply fischer UFS 310 to required parameters as per detailed instruction or approved system making sure that it is in contact with all surfaces to provide maximum adhesion - fischer UFS 310 can be installed using a standard sealant (caulking) gun or the fischer KP M2 Applicator
5. Tool sealant to a defect free finish using a wetted trowel or putty knife
6. Clean all equipment with water immediately after use



SPECIFICATIONS

Description	Order No.	Size [ml & lt]	Qty. Per Box	Suitable for use with
UFS 310	516538	310	12	-
UFS 19lt	533889	19lt	1	-
KPM2 Applicator Gun	53117	-	1	UFS 310

TECHNICAL DATA

Chemical Base:	Water-Based elastomeric
Density:	approx 1.31 g/cm ³
Application temperature:	+5°C to +40°C
Skin-forming time:	approx 20-30 min
Curing rate:	approx. 4mm in 72 hours*
Storage temperature:	+2°C to +49°C
Movement capability:	upto 50%**
Intumescent activation:	from 190°C to 593°C
Shelf-life:	36 months (under recommended conditions)
pH Value:	6.5 to 7
Sound transmission class: (dB) Tested in a UL 411 wall assembly to ASTM E90	54
Surface burning characteristics: ASTM E 84 UL 723 Tunnel Test	Flame spread - 5 Smoke index - 5
Colour	Red

* dependant on substrate, air humidity and weather conditions

** depending on UL listed system and configuration

APPLICATION DATA

The following dimensions must be observed when using fischer UFS

Services		Fire Ratings (Minutes)	
Types	Sizes	Integrated Rating	Insulation Rating
PVC/CPVC closed pipe systems	3" (75mm)	120 min	120 min
PVC/CPVC open pipe systems	2" (50mm)	120 min	120 min
Steel & Cast iron pipes	20" (508mm)	180 min	0
Copper pipes	6" (152mm)	180 min	0
Insulated services	20" (508mm)	120 min	120 min
Construction joints	4" (100mm)	120 min	120 min
HVAC	100" (2500mm)	120 min	120 min
Cable bunches	4" (100mm)	120 min	120 min
Cable tray/Ladder	24" (600mm)	120 min	45 min
Bus Bar	27" (686mm)	120 min	45 min

ADDITIONAL INFORMATION

Note: Please refer to SDS for further information

Recommendations

- Can be used in conjunction with a suitable backing material as approved in detailed instruction or approved system
 - Non-flammable mineral wool (min. 64 kg/m³)
 - PE backing rod

Storage

- Storage temperatures between +2°C and +49°C
- Store away from heat sources
- Keep container closed until use
- Monitor expiry date on tube