

## FireStop Collar for sealing a wide range of combustible pipe where they pass through fire rated walls and floors



### APPLICATIONS

- Non metallic pipes like PVC, HDPE, MDPE, ABS of various sizes through fire rated walls and floor assemblies.

### ADVANTAGES

- Easy retrofit at any time.
- Water resistant.
- No minimum annular service required.
- Up to 4 hours fire resistance.
- Pre-fixed attachment lugs.
- Integral toggle for secure fixture.

### APPROVALS



**British Standard**

**BS 476 - 20**

**BS EN 1366-3**

### BUILDING MATERIALS

#### Suitable for:

- Flexible and rigid wall partitions
- Solid concrete floors
- Hollow precast floors
- FCPS Coated Panel Systems

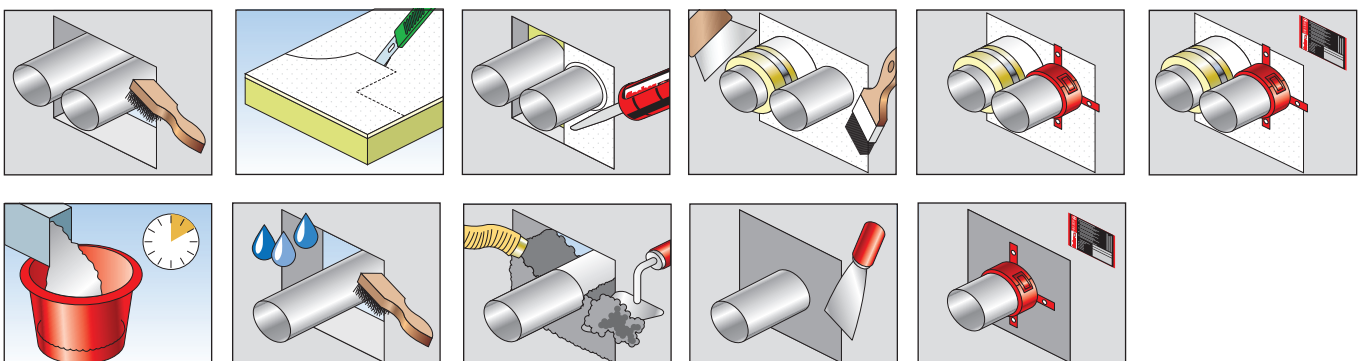
### DESCRIPTION

- Fischer Fire Collars - FFC is a powder coated cylindrical steel sleeve which contains a heat reactive graphite based intumescent material that expands during fire.
- Each collar has been designed to be securely fitted around the pipe and held in position with a retaining bolt. Fixed back to the substrate utilizing the integral attachment lugs prevents the FFC FireStop Collar from being dislodge or moving in a fire. A suitable anchor should be used to fix the FFC FireStop Collar back to the substrate. Please see Page 54 for more details.
- Any gaps up to 10 mm around FFC should be backfilled with fischer Intumescent Acoustic Mastic FiAM or larger annular space should be closed with fischer Coated Panel System - FCPS or fischer FireStop compound - FFSC.
- Tested to BS 476 part 20 and BS EN 1366-3, FFC provides up to 4 hours fire resistance in wall and floor assemblies.

### INSTALLATION

**Note: Firestop material must be installed in accordance with detailed instruction or the approved system.**

- Clean all contact surfaces so they are free from loose debris and contaminants. Ensure services are sufficiently supported as per approved system or local building codes.
- Close the annular space as per requirement with FiAM, FCPS or FFSC. and choose the correct size of FFC in accordance with the pipe diameter.
- Open the toggle clip, place FFC around the pipe with its fixing lugs pointing towards the building element.
- Lock the toggle clip and push it tightly against the surface of building element.
- Attach the collar to the building element through the mounting lugs with a minimum anchoring depth of 32mm and minimum 8mm dia fixing. (please refer to fischer fire rated fixing section for correct anchor).
- For vertical applications repeat installation on both sides as per the instruction in the approved system.



## SPECIFICATIONS

Description	Order No.	Size [ml]	Fire Rating	Qty.Per Box
<b>FFC 2 / 30-32</b>	52456	30-32	2	32
<b>FFC 2 / 38-40</b>	52480	38-40	2	32
<b>FFC 2 / 55</b>	52481	55	2	100
<b>FFC 2 / 63</b>	52482	63	2	50
<b>FFC 2 / 75</b>	52483	75	2	50
<b>FFC 2 / 82</b>	52486	82	2	50
<b>FFC 2 / 90</b>	52487	90	2	40
<b>FFC 2 / 110</b>	52488	110	2	40
<b>FFC 2 / 125</b>	52489	125	2	25
<b>FFC 2 / 160</b>	52500	160	2	10
<b>FFC 2 / 200</b>	52501	200	2	10

\* Details on larger sizes upto 400 mm and 4 hours fire rated collars are available on request.

## TECHNICAL DATA

State:	Solid
Colour:	Red sleeve with black inner component
Odour:	Odourless
Fire Rating:	4 hours - BS 476 Part:20
Available sizes:	min. >30mm & max up to 200mm
Significant expansion occurs at temperature:	> 180°C
Storage temperature:	n/a
Shelf-life:	n/a

\* dependant on substrate, air humidity and weather conditions

\*\* based on 20mm x 10mm gap using 310ml cartridge

## ADDITIONAL INFORMATION

Note: Please refer to SDS for further information

### Recommendations

1. Can be used in conjunction with fischer FCPS - Coated Panel System.
2. FFC can also be installed as flush mounted (cast-in).

### Storage

1. Store indoors in a dry area above the ground
2. Store away from heat sources and direct sunlight